

INPUT CHARACTERISTICS:**MDN2-6230F**

- VOLTAGE: DC – 42 V ~ – 56 V
- INPUT CURRENT: 9.0 A (RMS) FOR – 42 VDC
- INRUSH CURRENT: 10.0A MAX. FOR EACH POWER UNIT

OUTPUT CHARACTERISTICS:

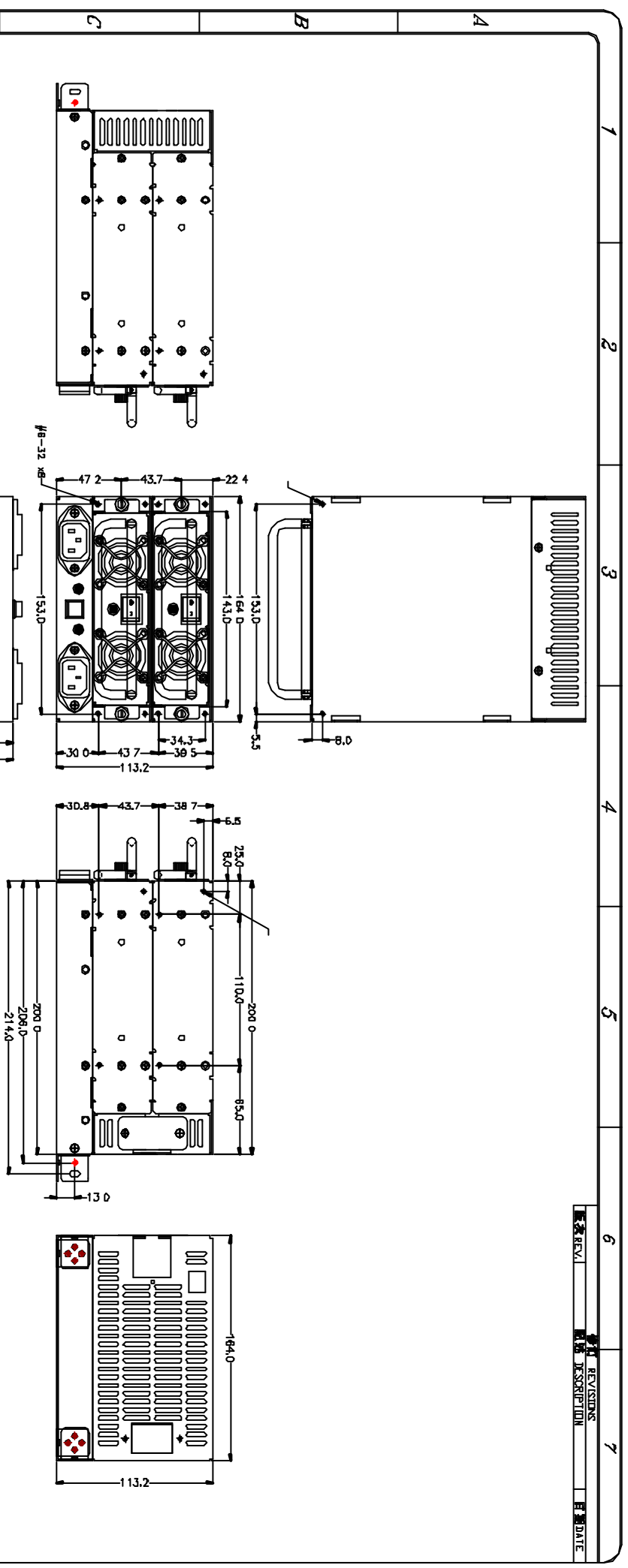
OUTPUT VOLTAGE	OUTPUT CURRENT		REGULATION		OUTPUT
	MIN. [A]	MAX. [A]	LOAD	LINE	RIPPLE & NOISE MAX. [P-P]
5V	4.0	20	± 5%	± 1%	50mV
12V	1.0	8	± 6%	± 1%	100mV
-5V	0	0.5	±10%	± 1%	100mV
-12V	0	0.5	-10%~+11%	± 1%	120mV
3.3V	0.5	10	± 5%	± 1%	50mV
+5VSB	0	1.0	± 5%	± 1%	50mV

REMARKS: TOTAL OUTPUT 230W

SPECIFICATION:

- TEMPERATURE RANGE: OPERATING 0 --- 50
- HOLD UP TIME: 16 ms MINIMUM AT FULL LOAD & NORMAL INPUT VOLTAGE
- DIELECTRIC WITHSTAND: INPUT / OUTPUT 1500 VAC FOR 1 SECOND
INPUT TO FRAME GROUND 1500 VAC FOR 1 SECOND
- EFFICIENCY: 66% TYPICAL, AT FULL LOAD
- POWER GOOD SIGNAL: ON DELAY 100 ms TO 500 ms, OFF DELAY 1 ms
- OVER LOAD PROTECTION: 130 +/- 20%
- OVER VOLTAGE PROTECTION: **+5V → 5.5V ~ 7V, 12V → 13.5V ~ 15.5V, 3.3V → 3.76 ~ 4.3V, 5VSB → 5.74 ~ 7V**
- SHORT CIRCUIT PROTECTION: EACH CHANNEL
- EMI NOISE FILTER: FCC CLASS B, CISPR22 CLASS B
- SAFETY: UL 1950, CSA 22.2 MP/ 950, TÜV IEC 950
- REMOTE ON / OFF CONTROL
THE UNIT SHALL ACCEPT A LOGIC OPEN COLLECTOR LEVEL WHICH WILL DISABLE / ENABLE ALL THE OUTPUT VOLTAGE (EXCLUDE +5V STANDBY), AS LOGIC LEVEL IS LOW, OUTPUTS VOLTAGE WERE ENABLE, AS LOGIC LEVEL IS HIGH, OUTPUTS VOLTAGE WERE DISABLE.
- N + 1 REDUNDANCY FUNCTION
- HOT-SWAPPABLE FUNCTION
- CURRENT / BALANCE LOAD SHARING DESIGN
- 3.3V / 5V REMOTE SENSING
- ISOLATION: BUILT-IN IN THE POWER MODULE
- COOLING: TWO 40mm DC FANS
- DIMENSION: 230 (D) x 164 (W) x 113.2 (H) mm
- CONNECTION: 48 PINS CONNECTOR (EPT PART NO. 109-40064 OR EQUIVALENT)

REV. NO.	REVISIONS	DATE
	DESCRIPTION	



材料規格: MATERIAL

公差: TOLERANCES
XXX ±.025
XX ±.100
X ±.250

投影法: PROJECTION
第三角法

核准者: APPROVED BY

日期: DATE

製圖者: DRAWN BY

日期: DATE

日期: DATE

品名: MRN2 外觀尺寸圖 (1)

圖號: MRN2MA00

圖號: MRN2MA00

圖號: MRN2MA00

圖號: MRN2MA00



新巨企業股份有限公司
ZIPPY SHIN JUIH CORP.
POWER DIVISION

圖號: MRN2MA00

圖號: MRN2MA00

圖號: MRN2MA00