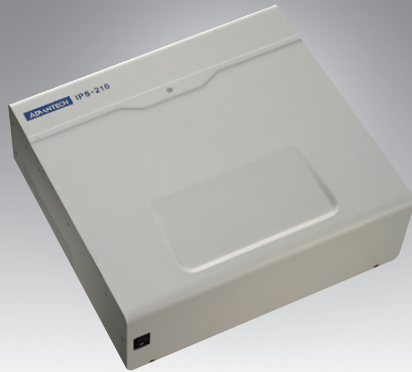


IPS-M210

210Wh Industrial Power Storage System with Lithium-Iron Phosphate Cell

NEW



Features

- Holds environmentally friendly, long life-cycle rechargeable batteries
- Fanless design for hospital environment
- Swappable battery pack design for quick and easy replacement
- 2 V_{DC} output with simultaneous power support
- Safety protection prevents against over charge and discharge
- "AMiS_Link" software solution for remote battery management

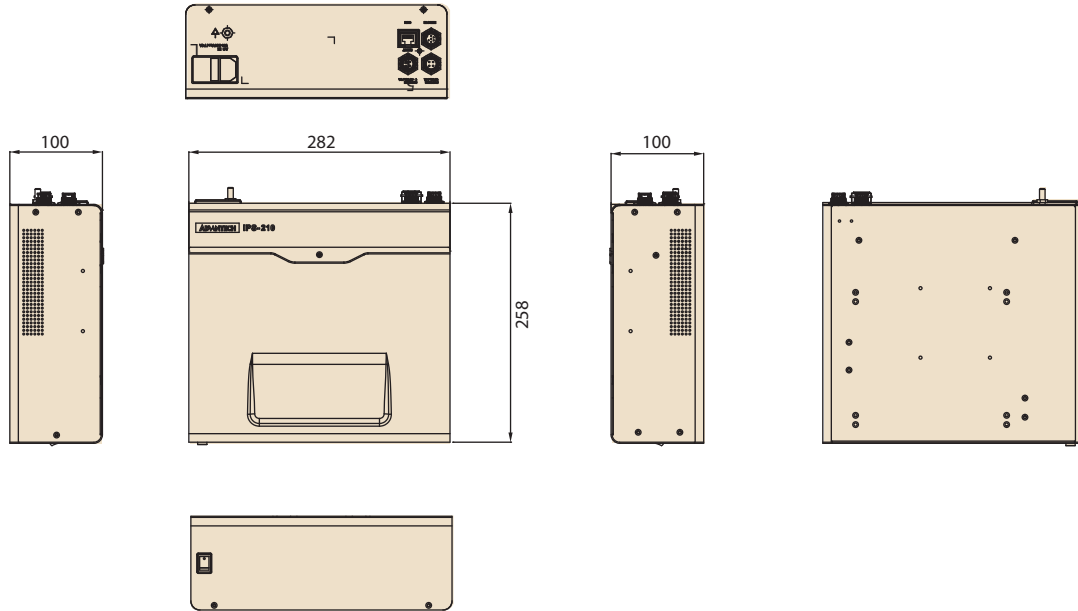


Specifications

Power Supply	Battery Type	Lithium-Iron Phosphate
	Battery Capacity	200Wh
	Battery Life SPAN	DOD 80%, 1000 cycles
	Charge Time	1.5hr. DOD 100%
	Weight	90 ~ 264 VAC, 47~63H
	Input Voltage	90 ~ 264 VAC, 47~63H
	DC Output Voltage	System 1: Battery Mode: 13.5 ~ 16.8 V, AC Mode: 19 V±5% (Max. 6 A) System 2: 12 V± 5% (Max. 4 A)
I/O Ports	Charging Status Indicators	LEDs with continuous readout; intelligent software
	DC Output Interface	DC Jack (4-pin mini lock din)
	Communication Interface	RS-232
Display & Controller	Power Button	Battery power button LED control button
	LED Display	LED display
Environmen	Vibration	5 ~ 500 Hz 1 G
	Cooling System	Fanless
	Water Resistance	IP67 DC output connector
Physical Characteristics	Dimensions	282 x 258 x 96.9 mm (11.1 x 10.15 x 3.81 inch)
	Weigh	5 kg
	Certifications	UL60950-1/EN60950-1, CE , FCC Class B
Power Manager Software	AMiS_Link	Battery capacity indicator Alerts (battery capacity, temperature, warning) Charging cycle statistics Report & log file Client & Server (CMS) Installation Multi-language support, including Chinese Traditional, Chinese Simple, English, German and Dutch
Warranty		12 months

Dimensions

Unit: mm



Ordering Information

Part Number	Cell Type	Battery Capacity	Life Cycle	Charge Time	Certificate	Weight	Remark
IPS-M210-LFA-AE	LFP	210Wh	DOD 80%, 1000 cycles	< 1.5hr. DOD 100%	CE, FCC, CCC	5.5 kg	
IPS-M210A-LFA-AE	LFP	210Wh	DOD 80%, 1000 cycles	< 1.5hr. DOD 100%	CE, FCC, CCC	5 kg	For AMiS Nursing Cart Only

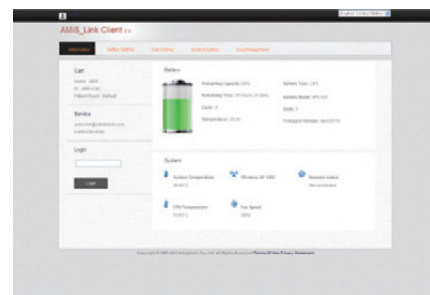
I/O ports



1. System 1: 15 ~ 19 V_{DC}, 6 A
2. System 2: 12 V_{DC}, 4 A
3. Remote Control Connector
4. RJ45 (to RS232) connector

5. AC In and AC On/Off Switch
6. Ground Pin

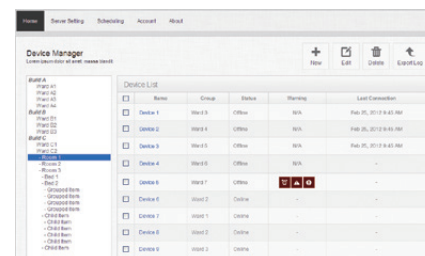
AMiS_Link



Client Screen

Packing List (iPS-M210-LFA-AE)

Part Number	Part Description	Quantity
1700019666	4-pin to Ring Terminal cable	1
1700019667	4-pin to DC Jack cable	1
1700018916	4-pin to DC Jack 80cm	1
IPS-REMT-00-AOE	6-pin remote control cable	1
1700019500	RJ-45 to RS-232 console cable	1



CMS Screen, Central Monitoring System (CMS)